

Elementary & Secondary Education

Data & Statistical Sources for Researching Education
Library Webinar Series for New Ed.D. Students, Fall 2013



Katharin Peter
USC Data Librarian
kpeter@usc.edu

Today

Approaches for finding:

- School-level data
- Broader educational research topics
- Where to get help

Finding Statistics & Data

	Approach	Analysis	Scope	Where to Start
1. Assessment	Local school population and/or assessment data	-school -district -county -state -etc.	-student characteristics -outcomes (API, dropouts) -school finance -staff/faculty	Elem/Secondary: -CA Dept of Education (Data Quest and ED-DATA) Postsecondary: -IPEDS survey (NCES)
2. Context	Data on the population surrounding the school	-(school) neighborhood -school district -city -state -nation -etc.	population characteristics & behaviors, for example: -demographics -ses characteristics -etc.	US Census & American Community Survey via: -Social Explorer -American FactFinder
3. Research	Topic (i.e., a research problem or special population)	-national -state (maybe) -subpopulation (e.g., first generation students, girls in sciences, etc.)	-bullying -ELL -after-school programs -student/teacher ratio -arts ed	-National Center for Education Statistics publication & surveys -Article databases (ERIC, Google Scholar)

Example: Poverty

Special Programs


John Marshall Senior High School,
2011-12

	School		District
	Number of Students	Percent of Enrollment	Percent of Enrollment
English Learners	442	15.2%	27.3%
Free/Reduced Price Meals ¹	1,985	68.5%	74.0%
Compensatory Education	2,899	100.0%	88.8%
Title I	Yes, Schoolwide Plan	N/A	N/A

¹ [Explanation](#) of enrollment calculation for Free/Reduced Price Meals.

Note: To protect privacy, data is not reported for schools with 5 or fewer students.

ALSO SEE ► [Special Programs definitions](#)

ALSO SEE ► [Pop-trends](#) 

Source: Data Reporting Office (CARS 3/5/13), CALPADS/CBEDS/CDS Operations Office (frpm1112.xls, 4/10/2013)

Student Subgroup Performance

Student Subgroups	# Pupils *	API Base
Black or African American	43	735
American Indian/Alaska Native	7	--
Asian	174	900
Filipino	265	827
Hispanic or Latino	1,209	683
Native Hawaiian/Pacific Islander	3	--
White	226	785
Two or More Races	5	--

Other Subgroups

Socioeconomically Disadvantaged	1,495	729
English Learners	756	597
Students with Disabilities	182	473

Total

All Students Included in Base API	1,932	738
-----------------------------------	-------	-----

The API is on a scale from 200 to 1,000, with 800 as a statewide target.

Subgroup data is not available prior to 1999-2000.

Source: California Department of Education, Academic Accountability Unit (API 2012 Base file apib12db dated 5/30/13)



MAKE A REPORT



SHARE



EXPORT

Data Selection

ACS 2006 -- 2010 (5-Year Estimates)

Families: Income in 2010 below poverty level



Shaded Area

- Insufficient data
- < 6.49
- 6.49 to 15.24
- 15.24 to 22.29
- > 22.29



COLORS



EDIT CUT-POINTS

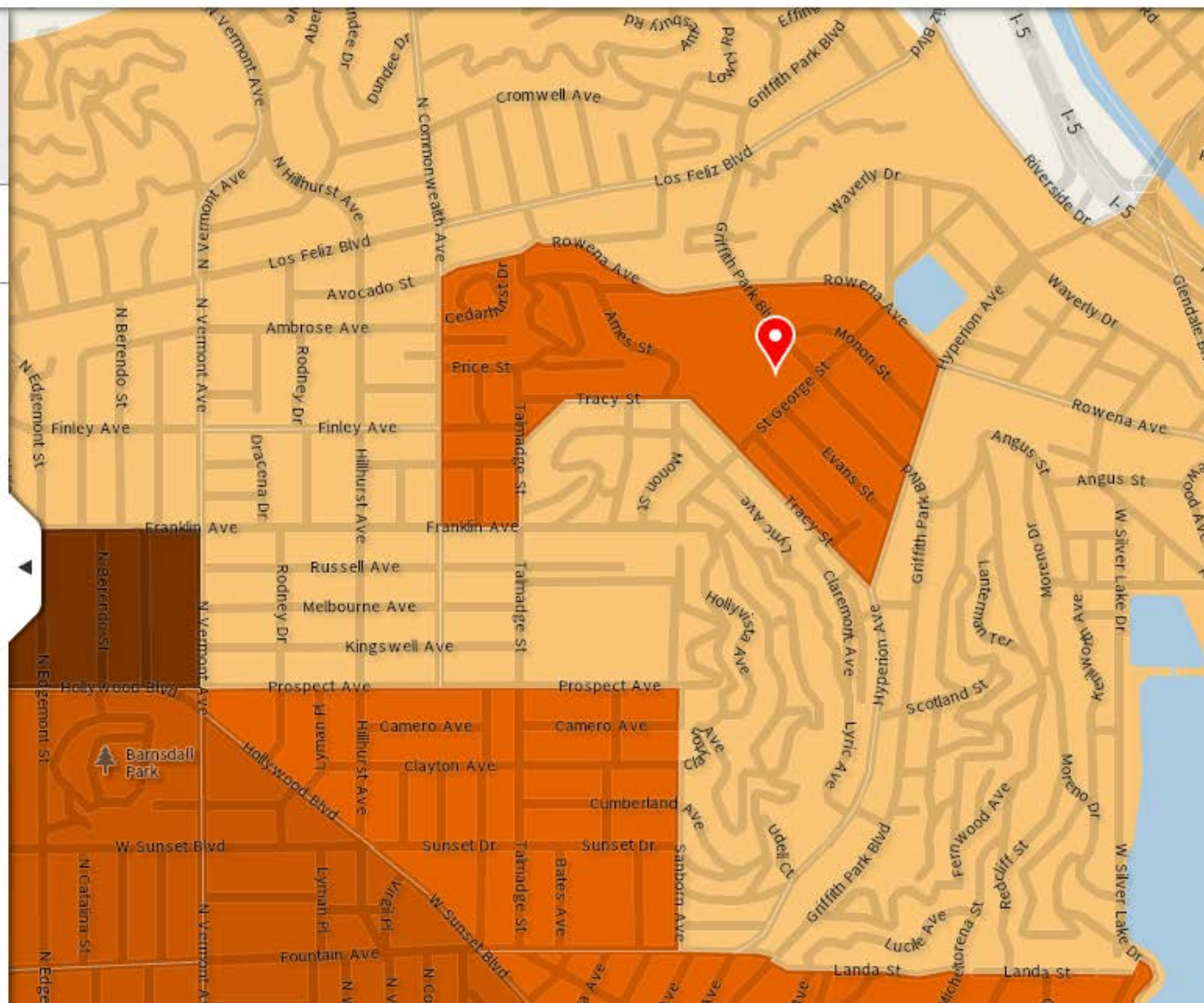


Table 1. Percentage distribution of all students and percentage of students with a parent/guardian who reported the child's school engaged in school communication practices, by household language and poverty status: 2002-03

Characteristic	All students	School communication practices		
		Personal notes or e-mails about student	Newsletters, memos, or notices addressed to all parents	Phone call
All students	100.0	49.6	91.5	42.5
Household language				
English-speaking	93.0	50.4	92.2	42.4
Spanish-speaking	7.0	39.7	82.3	43.7
Poverty status and household language				
Poor				
English-speaking	78.6	48.5	87.2	49.4
Spanish-speaking	21.4	39.8	81.3	43.8
Near-poor				
English-speaking	90.1	51.8	89.8	42.5
Spanish-speaking	9.9	38.7	83.2	44.1
Nonpoor				
English-speaking	98.4	50.3	94.3	40.8
Spanish-speaking	1.6	42.2	83.8	41.9

NOTE: Not all apparent differences in this table are statistically significant. Standard errors are available at <http://nces.ed.gov/pubsearch/pubsinfo.asp?pubid=2006086>.

SOURCE: U.S. Department of Education, National Center for Education Statistics, Parent and Family Involvement in Education Survey of the National Household Education Surveys Program (PFI-NHES:2003).

Finding Statistics & Data

	Approach	Analysis	Scope	Where to Start
1. Assessment	Local school population and/or assessment data	-school -district -county -state -etc.	-student characteristics -outcomes (API, dropouts) -school finance -staff/faculty	Elem/Secondary: -CA Dept of Education (Data Quest and ED-DATA) Postsecondary: -IPEDS survey (NCES)
2. Context	Data on the population surrounding the school	-(school) neighborhood -school district -city -state -nation -etc.	population characteristics & behaviors, for example: -demographics -ses characteristics -literacy -etc.	US Census & American Community Survey via: -Social Explorer -American FactFinder
3. Research	Topic (i.e., a research problem or special population)	-national -state (maybe) -subpopulation (e.g., first generation students, girls in sciences, etc.)	-bullying -ELL -after-school programs -student/teacher ratio -arts ed	-National Center for Education Statistics publication & surveys -Article databases (ERIC, Google Scholar)



Home
Superintendent
• Offices
• Newsroom
• Initiatives & Programs
State Board of Education
• Standards & Frameworks
• Meeting Agendas
• Meeting Schedule

Curriculum & Instruction	Testing & Accountability	Professional Development
Finance & Grants	Data & Statistics	Learning Support
		Specialized Programs

Our Mission

California will provide a world-class education for all students, from early childhood to adulthood. The Department of Education serves our state by innovating and collaborating with educators, schools, parents, and community partners. Together, as a team, we prepare students to live, work, and thrive in a highly connected world.



**Superintendent
Tom Torlakson**

Highlights

[Superintendent's Initiatives](#)

Superintendent Torlakson's plans to improve education for all children include *A Blueprint for Great Schools*, Career Readiness Campaign, Team California for Healthy Kids, Schools of the Future, and other in-progress working teams.

[Bullying and Hate-Motivated Behavior Prevention](#)

Resources for parents, administrators, and students on how bullying can be prevented and addressed.

[Common Core State Standards](#)

Information and resources to support implementation of California's new academic content standards for English language arts and mathematics.

[School and District Reports](#)

Get reports on Academic Performance Index, Adequate Yearly Progress, High School Exit Exam, STAR, enrollment, dropouts, staffing, and English learners.

[School Financial Emergency](#)

Reports on the impact of California's budget crisis on education.

What's New

[Finalists For National Teaching Award Named](#)

Posted 22-Jul-2013

[Nutrition Food Grants Awarded](#)

Posted 16-Jul-2013

[Free Book Giveaway](#)

Posted 15-Jul-2013

[Next Generation Science Standards Proposed](#)

Posted 15-Jul-2013

[RSS](#)

[more What's New](#)

Resources

- [Calendars](#)
- [Equal Opportunity](#)
- [Frequently Asked Questions](#)
- [Funding](#)
- [Jobs at CDE](#)
- [Laws & Regulations](#)
- [Multilingual Documents](#)
- [Publications](#)
- [Released Test Questions](#)
- [School Directory](#)
- [Staff Directory](#)

[more Resources](#)



Mobile



RSS



Twitter




Facebook

“10 Questions in 10 Minutes”

Census 2010

NOTE: THE FORM CAN NOT BE FILLED OUT ONLINE.
Roll over any question below for a more in-depth look at the form and the information we ask of you.



Click to enlarge form
Explore the English/Spanish form

- 1
- 2
- 3
- 4
- 5
- 6
- 7
- 8
- 9
- 10

1. How many people were living or staying in this house, apartment, or mobile home on April 1, 2010?

Number of people =

We ask this question to help get an accurate count of the number of people in the household on Census Day, April 1, 2010. The answer should be based on the guidelines in the “Start here” section. We use the information to ensure response accuracy and completeness and to contact respondents whose forms have incomplete or missing information.

Source: <http://www.census.gov/2010census/about/interactive-form.php>



MAKE A REPORT



SHARE



EXPORT

Data Selection

ACS 2006 -- 2010 (5-Year Estimates)

Families: Income in 2010 below poverty level



Shaded Area

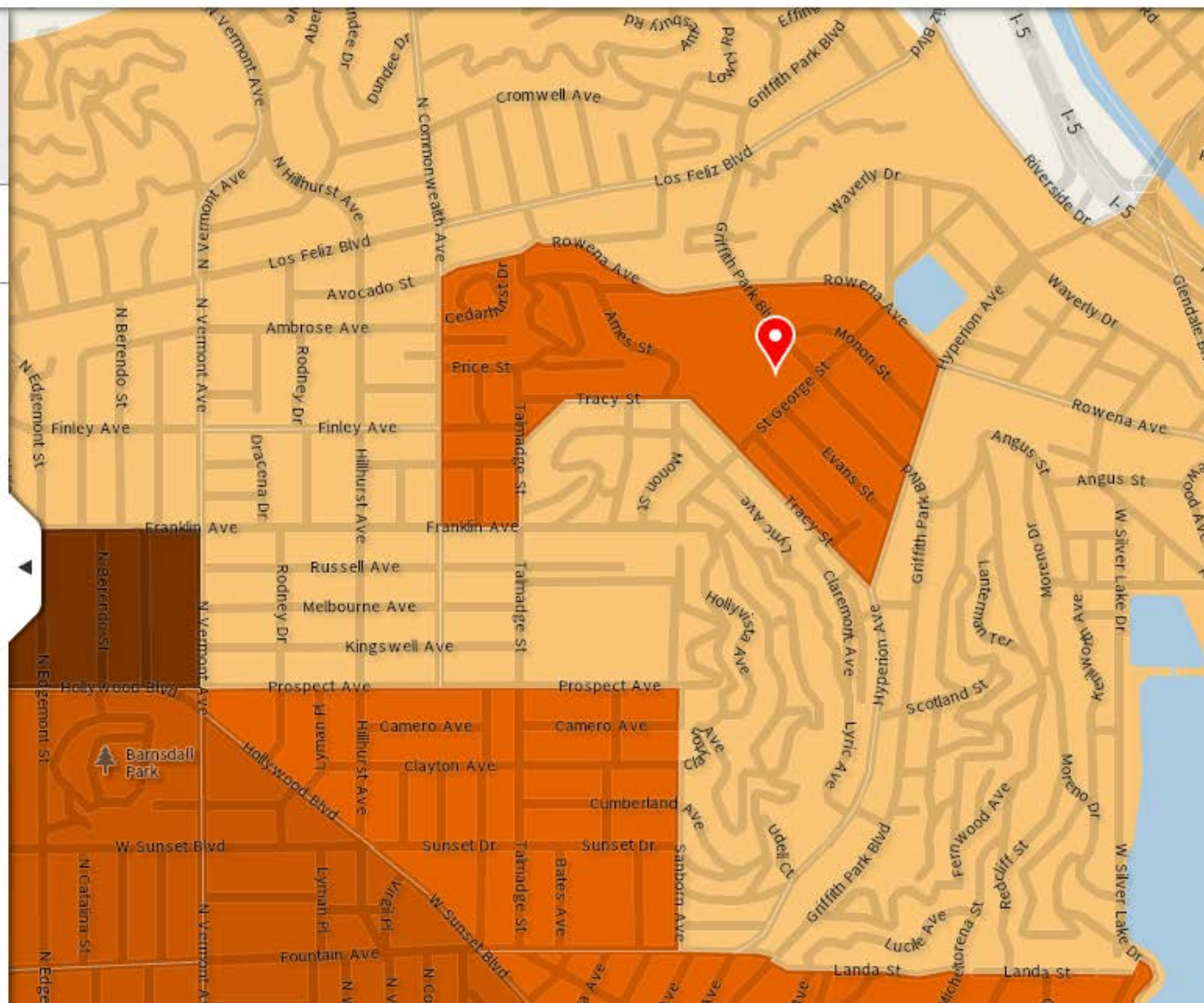
- Insufficient data
- < 6.49
- 6.49 to 15.24
- 15.24 to 22.29
- > 22.29



COLORS



EDIT CUT-POINTS



American Community Survey

- **Nationwide, continuous survey of social, economic & housing characteristics**

Key: More timely data but limitations

Social & Demographic

- Race/Ethnicity
- Education
- Marital Status
- Veterans
- Place of Birth
- Citizenship
- Language Spoken at Home
- Grandparent Caregivers

Economic & Housing

- Income
- Benefits
- Employment Status
- Occupation
- Industry
- Mortgage & Monthly Rent

Social Explorer: Maps & Tables

→ Link to old Social Explorer

Professional Edition provided by University of Southern California

 **Social Explorer**[®]
BETA

Maps & Tables

How To

My Explorer

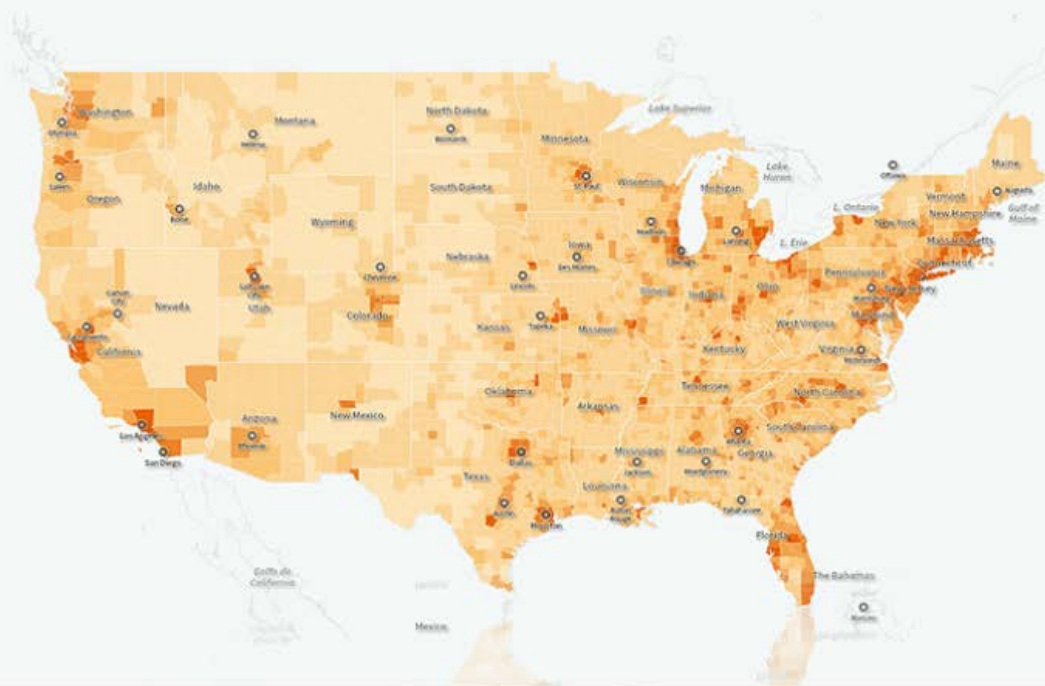
Log In or

Sign Up

Visually Explore Demographic Data

220 years of demographic data, 18,000 maps,
hundreds of profile reports,
40 billion data elements and 335,000 variables

Take the Tour



Our clients

The New York Times

Stanford
University



Yale University



TARGET

Show more

access: <http://www.usc.edu/libraries/>

Report

Excel

Data Download

Statistics

Los Angeles County, California

United States

SE:T25. Educational Attainment For Population 25 Years And Over

Population 25 Years and over:	6,268,121		199,726,659	
Less Than High School	1,511,061	24.1%	29,898,483	15.0%
High School Graduate (includes equivalency)	1,332,186	21.3%	57,903,353	29.0%
Some college	1,608,268	25.7%	56,197,824	28.1%
Bachelor's degree	1,192,974	19.0%	35,148,428	17.6%
Master's degree	401,171	6.4%	14,361,809	7.2%
Professional school degree	146,620	2.3%	3,898,130	2.0%
Doctorate degree	75,841	1.2%	2,318,632	1.2%

ACS10_5yr:B17018. Poverty Status In The Past 12 Months Of Families By Household Type By Educational Attainment Of Householder

	Estimate		Std. Error	Estimate		Std. Error
Total	2,170,227		4,010	76,254,318		139,870
Income in the past 12 months below poverty level	273,621	12.6%	2,383	7,685,345	10.1%	16,570
Married-couple family	117,467	5.4%	1,424	2,773,694	3.6%	8,008
Less than high school graduate	61,117	2.8%	972	1,009,017	1.3%	4,759
High school graduate (includes equivalency)	26,014	1.2%	631	866,063	1.1%	3,718
Some college, associate's degree	17,175	0.8%	561	589,338	0.8%	3,470
Bachelor's degree or higher	13,161	0.6%	461	309,276	0.4%	2,578
Other families	156,154	7.2%	2,008	4,911,651	6.4%	14,487
Male householder, no wife present	30,467	1.4%	840	760,085	1.0%	4,545
Less than high school graduate	13,751	0.6%	504	275,090	0.4%	2,820

ACS Estimates

- The ACS is continuously given to a **sample** of the population. Statistics calculated from the ACS are considered **estimates** and include a **margin of error**.
- **Multi-year estimates** provide more reliable estimates and may be needed for smaller geographies.
- The Census Bureau claims a confidence interval of 90% for the ACS estimates.

Report

Excel

Data Download

Statistics

Los Angeles County, California

United States

SE:T25. Educational Attainment For Population 25 Years And Over

Population 25 Years and over:	6,268,121			199,726,659		
Less Than High School	1,511,061	24.1%		29,898,483	15.0%	
High School Graduate (includes equivalency)	1,332,186	21.3%		57,903,353	29.0%	
Some college	1,608,268	25.7%		56,197,824	28.1%	
Bachelor's degree	1,192,974	19.0%		35,148,428	17.6%	
Master's degree	401,171	6.4%		14,361,809	7.2%	
Professional school degree	146,620	2.3%		3,898,130	2.0%	
Doctorate degree	75,841	1.2%		2,318,632	1.2%	

ACS10_5yr:B17018. Poverty Status In The Past 12 Months Of Families By Household Type By Educational Attainment Of Householder

	Estimate		Std. Error	Estimate		Std. Error
Total	2,170,227		4,010	76,254,318		139,870
Income in the past 12 months below poverty level	273,621	12.6%	2,383	7,685,345	10.1%	16,570
Married-couple family	117,467	5.4%	1,424	2,773,694	3.6%	8,008
Less than high school graduate	61,117	2.8%	972	1,009,017	1.3%	4,759
High school graduate (includes equivalency)	26,014	1.2%	631	866,063	1.1%	3,718
Some college, associate's degree	17,175	0.8%	561	589,338	0.8%	3,470
Bachelor's degree or higher	13,161	0.6%	461	309,276	0.4%	2,578
Other families	156,154	7.2%	2,008	4,911,651	6.4%	14,487
Male householder, no wife present	30,467	1.4%	840	760,085	1.0%	4,545
Less than high school graduate	13,751	0.6%	504	275,090	0.4%	2,820

American FactFinder

U.S. Department of Commerce

United States[™]
Census
Bureau

AMERICAN
FactFinder

Feedback FAQs Glossary Help

MAIN COMMUNITY FACTS GUIDED SEARCH ADVANCED SEARCH DOWNLOAD OPTIONS English Español

▼ **Community Facts**

Find popular facts (population, income, etc.) and frequently requested data about your community.

Enter a state, county, city, town, or zip code:
e.g., Atlanta, GA

▶ **Guided Search**

▶ **Advanced Search**

▶ **Download Options**



access: <http://factfinder2.census.gov/>

Welcome to NCES

The National Center for Education Statistics (NCES) is the primary federal entity for collecting and analyzing data related to education.

What's New

NCES releases the restricted-use data for the kindergarten rounds of data collection for the Early Childhood Longitudinal Study, Kindergarten Class of 2010-11 (Jul 17)

The Early Childhood Longitudinal Study, Kindergarten Class of 2010-11 (ECLS-K:2011) is a longitudinal study following a nationally representative sample of students from their kindergarten year to the spring of 2016, when most of the students are expected to be in fifth grade. [» more info](#)

NCES releases national and state revenues and expenditures for public elementary and secondary education for School Year 2010-11 (FY 11) (Jul 16)

This First Look report presents state-level data on revenues by source and expenditures by function for public elementary and secondary education for school year 2010-11. [» more info](#)

Postsecondary Institutions and Price of Attendance in 2012-13; Degrees and Other Awards Conferred: 2011-12; and 12-Month Enrollment: 2011-12: First Look (Provisional Data) (Jul 9)

This First Look report is a revised version of the preliminary report released on May 21, 2013. [» more info](#)

The Nation's Report Card: Trends in Academic Progress 2012 (Jun 27)

This report presents the results of the NAEP long-term trend assessments in reading and mathematics administered during the 2011-12 school year to 9-, 13-, and 17-year-old students. [» more info](#)



Did You Know?

Public school students in 28 states scored higher than their peers in the nation; students in 15 states and the District of Columbia scored lower than their peers nationally. The interactive map provides details. [» more info](#)

Data Snapshot

TIMSS (International) 2011 Assessment
8th GRADE SCIENCE SCORE

U.S. AVG. : 525
TIMSS Scale AVG. : 500
[» more info](#)



Most Viewed NCES Sites

[Statement of Commitment to Scientific Integrity by Principal Statistical Agencies](#) (346 KB)

The International Year of Statistics is a worldwide celebration and recognition of the contributions of statistical science. [Learn more.](#)



Additional Sources:

The screenshot displays the USC Libraries website interface. At the top, a navigation bar includes links for 'Everything', 'Books', 'E-books', 'Articles', 'Databases' (highlighted with a red box), 'Journals', 'Archival Documents', and 'More'. Below this is a search section with a 'QUICK SEARCH' dropdown, a search input field containing 'RAND California', and a 'Search' button. A red arrow points to the 'QUICK SEARCH' dropdown, and a link for 'Advanced Search' is visible below the input field. To the right, a 'SEE ALSO' section provides a link to 'Browse a complete list of USC Libraries' licensed and free databases' and two sub-links: 'Browse by subject' and 'Browse A-Z'. Below the search section, a 'POPULAR LINKS' section features a row of links: 'Database quick links', 'Resources by subject', 'Research guides', 'Journals A-Z', 'HOMER catalog', 'Try out new HOMER beta', 'RefWorks', 'USC Digital Library', and 'Specialized research collections'. A second row of links with icons includes 'Renew books', 'My checkouts & holds', 'Off-campus & wireless log-in', 'Hours & locations', 'ARES Course reserves', 'ILLIAD Interlibrary loan & document delivery', 'Reserve a study space', 'Print & copy', 'Jobs', 'Librarian & staff directory', and 'Mobile resources'.

Everything Books E-books Articles **Databases** Journals Archival Documents More ▾

QUICK SEARCH ▾ RAND California Search

[Advanced Search](#)

SEE ALSO

Browse a complete list of USC Libraries' licensed and free databases:

- ➔ Browse by subject
- ➔ Browse A-Z

POPULAR LINKS

Database quick links ▾ Resources by subject Research guides ⓘ Journals A-Z ⓘ HOMER catalog ⓘ Try out new HOMER **beta** ⓘ RefWorks ⓘ USC Digital Library ⓘ Specialized research collections ⓘ

Renew books My checkouts & holds Off-campus & wireless log-in ⓘ Hours & locations ARES Course reserves ⓘ ILLIAD Interlibrary loan & document delivery ⓘ Reserve a study space Print & copy Jobs Librarian & staff directory Mobile resources

access: <http://www.usc.edu/libraries/>



California Statistics
A SERVICE OF THE RAND CORPORATION

[Home](#) | [About RAND](#) | [Opportunities](#) | [Research Areas](#) | [Books & Publications](#) | [View Cart](#)

[Databases](#)

[Whats New](#)

[Subscribe](#)

[Special Requests](#)

[Research Publications](#)

[FAQ](#)



California Statistics

Welcome RAND California Subscriber

Keywords:

RAND California is a [subscription](#)-the nation's leading think tank. [Li](#)
[subscription](#).

RAND California contains more
county, and city levels. Data ar
site.

[Business and Economics](#) ▶

[Community](#) ▶

[Education](#) ▶

[Energy and Environment](#) ▶

[Government Finance](#) ▶

[Health and Socioeconomic](#) ▶

[Population and Demographics](#) ▶



Education Statistics

[Databases](#)

[Whats New](#)

[Subscribe](#)

[Special Requests](#)

[Research Publications](#)

RAND California Education Statistics contains the following databases

K-12 Enrollment and Demographics

[District and School Enrollment](#)

[Enrollment by Ethnicity and Grade Level](#)

[Enrollment Projections](#)

[U.S. K-12 Dropout and Completion Rates](#) (summary data by District)

[U.S. 9-12 Dropout and Completion Rates](#) (detailed data by State) **(New)**

[U.S. K-12 Enrollment](#)

[U.S. K-12 Enrollment Projections](#)

[U.S. K-12 Free- and Reduced Meals](#) **(New)**

[U.S. K-12 Pupil-Teacher Ratios](#) **(New)**

College and University

[University of California Enrollment](#)

[California State University Enrollment](#)

[Community College Enrollment](#)

[Public College and University Enrollment Projections](#)

[Private College and University Enrollment](#)

[U.S. College Enrollment](#)

Language

[Enrollment by English Learners](#)

[Transition from Limited English to Fluent English](#)

K-12 Expenditures, Revenues, and Salaries

[Annual Spending Per Pupil](#)

[Annual Spending Per Pupil in U.S. Schools](#) **(New)**

[District Expenditures and Revenues](#)

[Public School Teacher Salaries, Benefits, and Steps](#)

[U.S. School District Finances: Expenditures & Revenues](#) **(New)**

[State-Level Public School Finances](#) **(New)**

[Teacher Experience and Salaries for U.S. Schools & Districts](#) **(New)**

K-12 Test Scores and Other Performance Measures

[Academic Performance Index \(API\)](#)

[STAR \(Standardized Testing and Reporting exams\)](#)

[SAT scores](#)

[High School Performance Measures](#)

Other

[Average Daily Attendance](#)

[Class Size, Pupil-Teacher Ratio and Other School District Statistics](#)

[Computer and Internet Access](#)

[Free and Reduced Meals](#)

[High School Graduates by Ethnicity](#)

[Private Schools](#)

[Private Schools in U.S. States](#) **(New)**

[Teacher Demographics](#)



Find & Analyze Data

Membership in ICPSR

Deposit Data

ICPSR Summer Program

Resources for Instructors

Data Management & Curation

Results 1 - 21

Results per page: 25

Sort by: Title A-Z

[1]

Study Title/Investigator

1. [Children at Risk in the Child Welfare System: Collaborations to Promote School Readiness](#) (ICPSR 30821)
Ward, Helen; Yoon, Sun Young; Oldham, Erin
2. [A Data-Based Assessment of Research-Doctorate Programs in the United States, 2005-2006](#) (ICPSR 34318)
National Academy of Sciences. National Research Council
3. [Design, Validation, and Dissemination of Measures of Content Knowledge for Teaching Mathematics](#) (ICPSR 33421)
Hill, Heather; Loewenberg Ball, Deborah; Bass, Hyman; et al.
4. [Early Childhood Longitudinal Study \[United States\]: Kindergarten Class of 1998-1999, Kindergarten-Eighth Grade Full Sample](#) (ICPSR 28023)
United States Department of Education. Institute of Education Sciences. National Center for Education Statistics
5. [Gates Millennium Scholars Program \(GMS\) Cohort 1, 2000-2008](#) (ICPSR 34375)
Bill and Melinda Gates Foundation
[4 more results](#) in [Gates Foundation Scholars Series](#)
6. [Head Start Family and Child Experiences Survey \(FACES\): 1997 Cohort \[United States\]](#) (ICPSR 4134)
United States Department of Health and Human Services. Administration for Children and Families. Office of Planning, Research and Evaluation
[4 more results](#) in [Head Start Family and Child Experiences Survey \(FACES\) Series](#)
7. [High School Exit Examinations \(HSEE\), 1977-2007 \[United States\]](#) (ICPSR 32661)
Warren, John Robert
8. [The Impact of Childhood Behavior Problems on Child Care and Employment Decision-Making: A Nationally Representative Panel Study](#) (ICPSR 31401)
Montes, Guillermo
9. [Infant Health and Development Program, Phase IV, 2001-2004 \[United States\]](#) (ICPSR 23580)
McCormick, Marie C.; Brooks-Gunn, Jeanne; Buka, Stephen L.

Gates Millennium Scholars Program (GMS) Cohort 1, 2000-2008 (ICPSR 34375)

Principal Investigator(s): Bill and Melinda Gates Foundation

Summary:

In 1999, the Bill and Melinda Gates foundation started the Gates Millennium Scholars Program (GMS), a 20-year initiative which intends to expand access to higher education for high achieving, low-income minority students. In addition to its academic objectives, GMS also has the goal of creating future leaders in minority groups. The program is administered by the United Negro College Fund (UNCF). In 2000, the first year of the program, over 4,000 grants were awarded to minority students who were... ([more info](#))



RCMD

RESOURCE CENTER
FOR MINORITY DATA

This study is provided by [Resource Center for Minority Data](#) (RCMD).

Series: [Gates Foundation Scholars Series](#)

Access Notes

- **One or more files in this study are not available for download due to special restrictions;** consult the [restrictions note](#) to learn more. You can [apply online for access to the data](#). Authentication is required to apply for access.

Dataset(s)

WARNING: Because this study has many datasets, the **download all files** option has been suppressed, and you will need to download one dataset at a time.

WARNING: This study is over 150MB in size and may take several minutes to download on a typical internet connection.

DS1: Freshmen Cohort 1 (2002) Baseline Survey

Documentation: [Codebook.pdf](#) [Questionnaire.pdf](#)

Download: [SAS](#) [SPSS](#) [Stata](#) [R](#) [ASCII](#) [Delimited](#) [All Dataset Files](#) (11,873 KB)
ASCII + [SAS Setup](#) [SPSS Setup](#) [Stata Setup](#)

Analyze Online: [run simple crosstab/frequency](#) [online analysis with SDA](#)

Getting Help



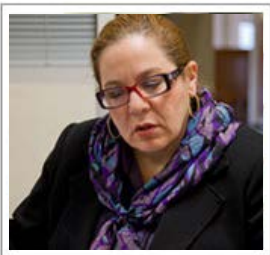
Melanee Vicedo
Education Librarian

<http://libguides.usc.edu/education>
vicedo@usc.edu



Katharin Peter
USC Data Librarian

<http://libguides.usc.edu/data>
kpeter@usc.edu



Brenda Osuna
ITS Statistical Consultant

<http://www.usc.edu/its/stats/>
brendao@usc.edu

Thank You

Katharin Peter

kpeter@usc.edu

(213) 740-1700